

MAX44™ Total Fuel System Cleaner Stock No. C-44



Max44™ is designed to help solve fuel system problems caused by excessive deposits. The Max44™ formula is so powerful it is recommended to be used by professional mechanics before tune-ups. It is so powerful it works with just one tankful of treated gas. Easy to use B just add to the gas tank to restore fuel systems to top power and performance. It cleans the entire system including injectors, intake valves, combustion chambers, and pistons.

Even with high quality and high octane gas, normal stop & go driving, short trips and just shutting your engine off can cause carbon deposits throughout the fuel system. Deposit build-up can cause poor acceleration, hesitation, rough running, knock, stalling, engine run-on and wastes gas. Max44™ is a unique blend of concentrated synthetic cleaners formulated to help restore original power, acceleration & octane requirement in 3 steps.

1. Cleans Fuel Injectors & Carburetors

Deposit Problems: deposits clog injectors, foul spray patterns, rob power, cause hesitation, increase emissions **Max44™ Solution:** Dissolves olefin deposits in injector nozzles to improve starting and save gas, reduce emissions and increase power.

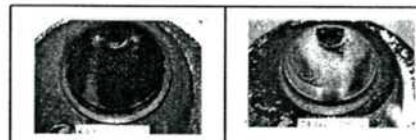
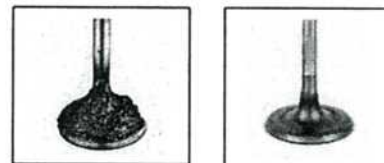
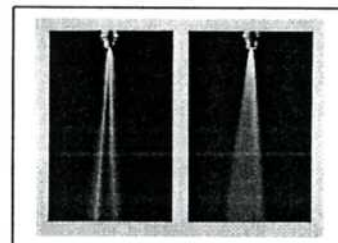
2. Cleans Intake Valves, Manifolds

Deposit Problems: valve deposits disrupt the proper flow of fuel and air into the combustion chamber. This can rob power, increase emissions & cause poor *driveability*. **Max44™ Solution:** Cleans intake valves, manifolds & ports to reduce emissions, engine Arun-on≅ and restore lost power.

3. Reduces Combustion Chamber & Intake Port Deposits

Deposit Problems: deposits in the combustion chamber takes up space which increases compression ratios and disrupts smooth fuel flow. This can cause knocking, pinging, poor acceleration, increased emissions. **Max44™ Solution:** Provides a noticeable performance difference - reduces hesitation, reduces knock, ping, & run-on, and improves acceleration. It's like using a higher-octane gasoline.

- Restores maximum power plus reduces emissions
- Cleans injectors, carburetors, intake valves, and combustion chambers clean
- Controls octane requirement increase
- Reduces nitrous oxide emissions (NO_x) hydrocarbon (HC), carbon monoxide (CO)
- Improves fuel economy
- Improves acceleration
- Improves starting
- Eliminates knock & hesitation
- Safe for catalytic converters
- Provides fuel stability during storage



Clean Up & Restorative Product

Directions: 1. When gas tank is nearly empty, pour entire contents of container into tank. 2. Refuel with up to 18 gallons of fuel. For best results, repeat every 3,000 miles.

Preventive Maintenance: Cyclo Max44 works best to maintain like new engine performance if new car owners use it before 10,000 miles and on a regular basis. This is "preventive maintenance" to keep the deposits from first forming.

Tests Passed by Max44: BMW 318I Intake Valve Deposit (IVD) test, Chrysler 2.2L Port Fuel Injector (PFI) clean up test, Chrysler 3.3L Combustion Chamber Deposit (CCD) test, Ford 2.3L IVD test.

PHYSICAL PROPERTIES

Size	16 fl. oz. / 473 mL	Cases per pallet	170
Package	Blue plastic bottle	Cases per layer	34
Flash Point	145-185°F	Layers per pallet	5
Boiling Range	480-640°F (249-338°C)	Cube	0.26
Specific Gravity (H ₂ O = 1)	0.8728	Case Weight	6.5 lbs
Appearance	Colorless to pale yellow liquid	UPC (Bottle)	0 89269 00044 0
Solubility in Water	Negligible	UPC (Carton)	1 00 89269 00044 7